



**City of Auburn**  
**Environmental Services Department**  
**Catrina W. Cook, Environmental Services Director**



# Agenda

- ▶ Mission Statement
- ▶ Overview of Services
- ▶ Sustainability/Recycling (Materials Management)
- ▶ Recycling Campaigns
- ▶ Questions

**RECYCLE,  
AUBURN.**



**WHAT ARE YOU  
WASTING FOR?**

Find out what you can recycle at  
[auburnalabama.org/garbage-and-recycling](http://auburnalabama.org/garbage-and-recycling)



City of Auburn

# Mission Statement

- The mission of the Environmental Services Department is to provide top quality services that meet the needs of the Auburn community and to comply with all applicable regulations and standards.
  
- Through the directives of the City Council and City Manager, we will achieve this by:
  - a) Developing and maintaining a highly professional and technically competent staff
  - b) Administering an integrated solid waste management system that focuses on the utilization of the best practices standards of the profession
  - c) Providing an animal control and care program that is attentive to both the human and animal element
  - d) Administering the city's vehicle and equipment maintenance program consistent with the best practices standards of the profession

- The 2020 census shows that Auburn’s population is 76,143, a 42.6% increase since 2010, making Auburn the seventh-largest city in Alabama.
- We continue to be the fastest growing city of our size in the state and the 31st fastest growing city in the U.S (on a percentage basis) for cities with a population of 50,000 or more.

# CITY OF AUBURN CITIZEN SURVEY

## CONDENSED FINDINGS REPORT 2022

### OVERALL SATISFACTION WITH CITY SERVICES

**89%** City's School System 

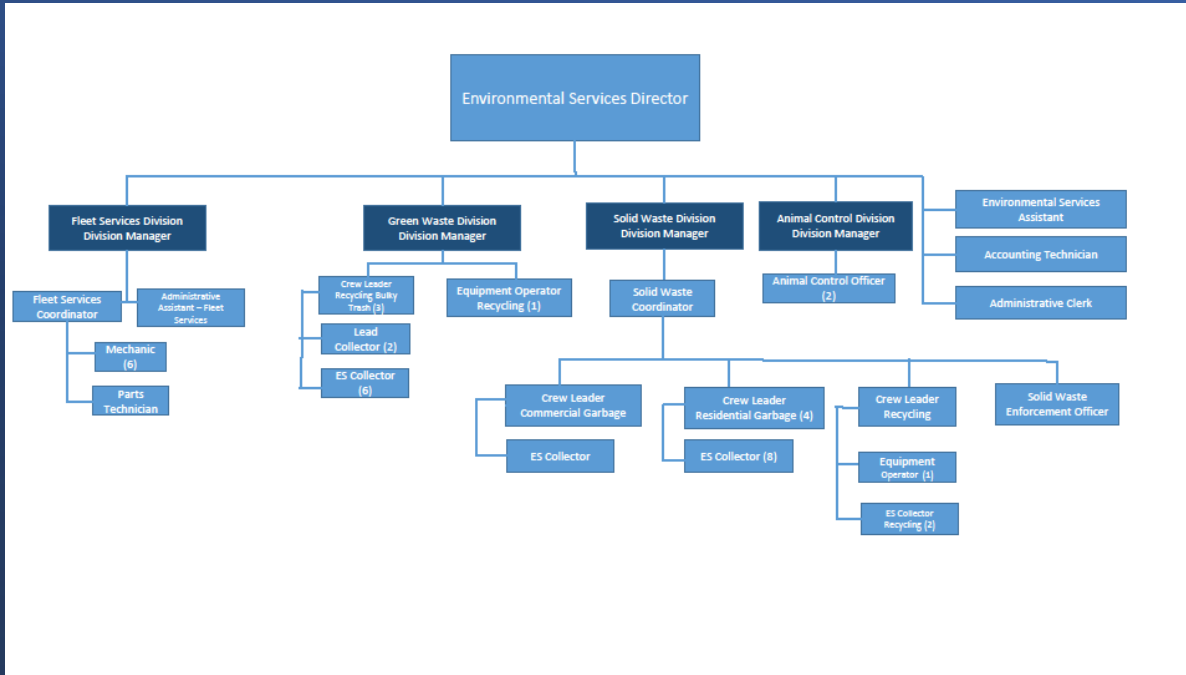
**91%** Garbage, Recycling, and Waste Services 

**87%** City's Library System 

The top areas of satisfaction in the City are Police and Fire services; overall quality of the school system; collection of garbage recycling and waste; and the City's library services.

Respondents feel that emphasis should be placed on the flow of traffic and congestion on City streets, maintenance of City infrastructure and the quality of the City's school system over the next two years. The Citizen Survey from 2020 held these same priorities.

### SATISFACTION WITH SPECIFIC CITY SERVICES



## Department Divisions

<u>Division</u>	<u>No. of Employees (Regular/Full-Time)</u>
Administration	5
Animal Control	3
Fleet Services	10
Recycling	18
Solid Waste	<u>17</u>
<b>TOTAL</b>	<b>53</b>



## Recycling Division

- In 1987, the City of Auburn became the first municipality in the state of Alabama to introduce curbside recycling services to residential customers.
- In 1999, the Recycling Drop-Off Center and Compost Demonstration was established to provide citizens the opportunity to recycle 24 hours a day 7 days a week.



# AUBURN RECYCLES



TO SIGN UP,  
[auburnalabama.org/recycle/opt-in](http://auburnalabama.org/recycle/opt-in)



# Single-Stream Recycling

Environmental Services / Garbage and Recycling

## Single-stream Recycling began December 2017

The City of Auburn transitioned to single-stream recycling on Dec. 4, 2017! Using 95-gallon blue recycling carts, customers will now be able to place **all recyclables into one container** and place them at the curbside on their scheduled garbage collection day. Acceptable single-stream materials are:

- Aluminum cans
- Flattened cardboard
- Paper: all types including junk mail, envelopes, magazines, newspapers, office paper, etc.
- Plastic: #1 through #7, including plastic bottles and food containers; no toys
- Steel/tin cans

NO glass, plastic bags, plastic straws, Styrofoam or any other material is accepted as part of single-stream recycling. **Glass can be recycled at our Recycling Drop-off Center at 365-A N. Donahue Drive.**

**SINGLE-STREAM RECYCLING GUIDE**  
**MIX ALL RECYCLABLES HERE**

Plastic #1 - #7  
- Bottles  
- Containers

Cardboard (flatten)

Paper - All types  
- Catalogs  
- Junk mail  
- Magazines  
- Newspaper  
- Office paper

Aluminum Cans

Steel/Tin Cans

NO PLASTIC BAGS

NO STYROFOAM™

NO GLASS

**NO GARBAGE OR YARD WASTE**

For further information contact:  
**Environmental Services**  
**334-501-3080**  
[www.auburnalabama.org/environmental-services](http://www.auburnalabama.org/environmental-services)

IL 0000-316 SEPT17

**REDUCE  
REUSE  
RECYCLE**



- **Single Stream Recycling began 2017 with a \$288,000 grant from ADEM**
- **The Recycling Partnership \$175,000 grant promotes recycling**
- East Alabama Recycling Partnership (EARP) formed in 2009 by the City of Auburn, Auburn University, City of Opelika and Lee County to:
  - Promote recycling and waste reduction on a County-wide level

# Acceptable Single-Stream Materials

- **Plastics #1-#7** (no plastic bags or plastic straws; items should be rinsed and clean)
- **Aluminum cans** (items should be rinsed and cleaned)
- **Steel/tin cans** (items should be rinsed and cleaned)
- **Newspaper**
- **Cardboard** (flatten)
- **Magazines**
- **Mixed paper, junk mail, etc.**



# The Recycling Drop-Off Center

## Acceptable Materials

- Batteries
- Cellular phones
- Cooking grease/oil
- Glass bottles and jars
- Scrap Metal
- Electronics
- Cardboard

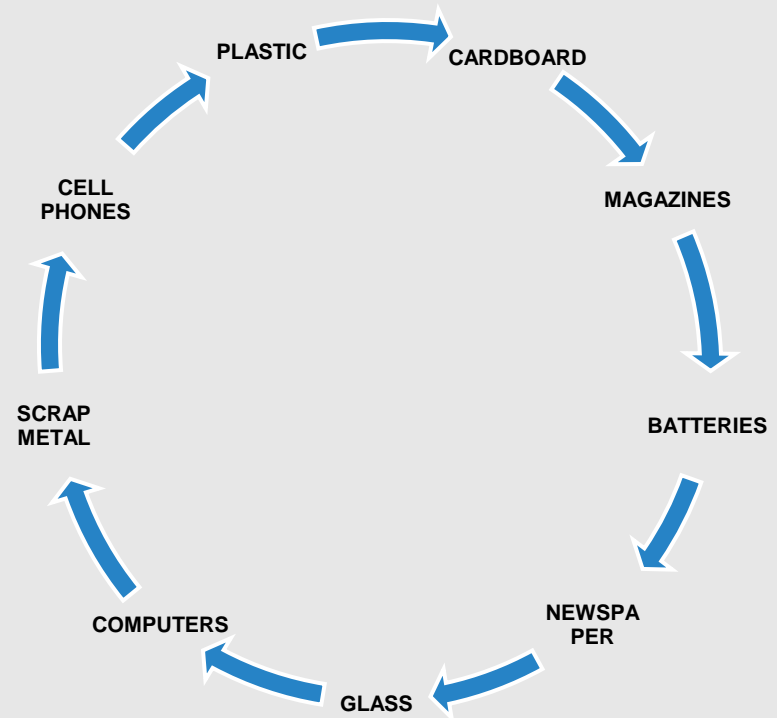




➤ Curbside recycling program participation rate = 82.4%

➤ National average = 34% (US EPA)

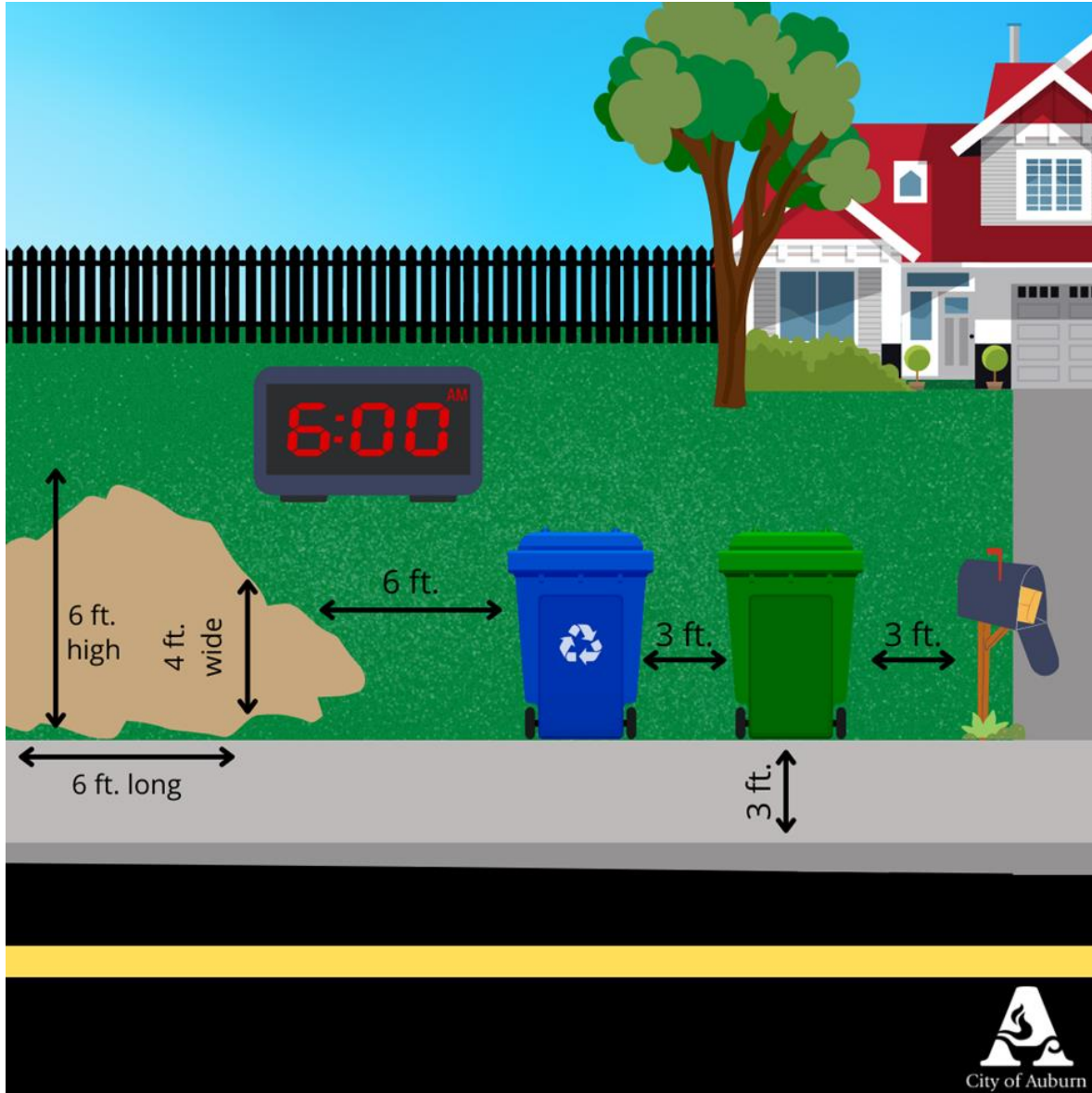
➤ Alabama average = 25% (ADEM)



# The What Goes Where App: Helping You Place Items in the Correct Cart, One Item at A Time

- For example, if you type in greasy pizza box and click enter, the app will show you the following item and where to place it; either in your green garbage cart or in the blue recycling cart.

The screenshot displays the 'What Goes Where?' app interface. At the top, a blue header contains the title 'What Goes Where?' and a 'Share' button. Below the header is a navigation bar with three options: 'What Goes Where?' (highlighted with a green border), 'Waste Sorting Game', and 'Need help?'. The main content area shows a search result for 'Pizza box (greasy)'. On the left, there is a '< Back' button and a search input field containing 'Type an item'. The result is categorized under 'Garbage' and includes the instruction 'Put this item in your green garbage cart' with a green trash can icon. Below this, the 'Set-out Time' section states: 'All carts should be placed at curbside by 6 a.m. on your scheduled collection day' with a clock icon. A '< Back' button is located at the bottom left of the result area. On the right side, there is an image of a greasy pizza box. At the bottom of the app, there are links for 'Privacy | Terms of Service | Cookie Policy' and a footer that reads 'List of Materials' on the left and 'Powered by ReCollect' on the right.





FACT: 14 recycled plastic bags equal the gas required to drive one mile.





RECYCLING

# BE CART SMART

- CLEAN RECYCLABLES
- DON'T BAG
- CLOSE THE LID
- LEAVE SPACE

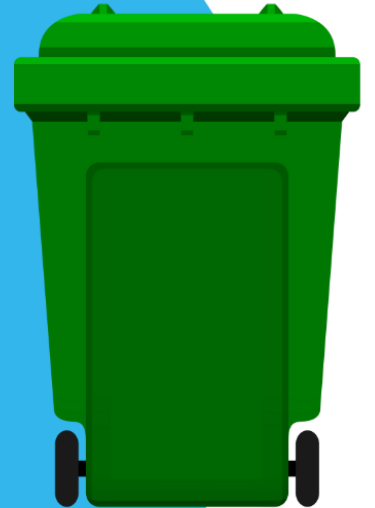


WHAT CAN BE RECYCLED CURBSIDE?  
VISIT [AUBURNALABAMA.ORG/GARBAGE-AND-RECYCLING](http://AUBURNALABAMA.ORG/GARBAGE-AND-RECYCLING)



# BE CART SMART

- BAG THE GARBAGE
- SEAL THE LID
- LEAVE SPACE



EXTRA BAGS? GIVE US A CALL AT (334)501-3080.





City of Auburn



Catrina W. Cook  
Environmental Services Director  
ccook@auburnalabama.org  
(334) 501-3080

