

# Recycling in Alabama

**Presented by:  
Rick Kelsey, Chief  
Materials Management Section**

**Alabama Recycling Coalition – Expo  
August 25, 2023**



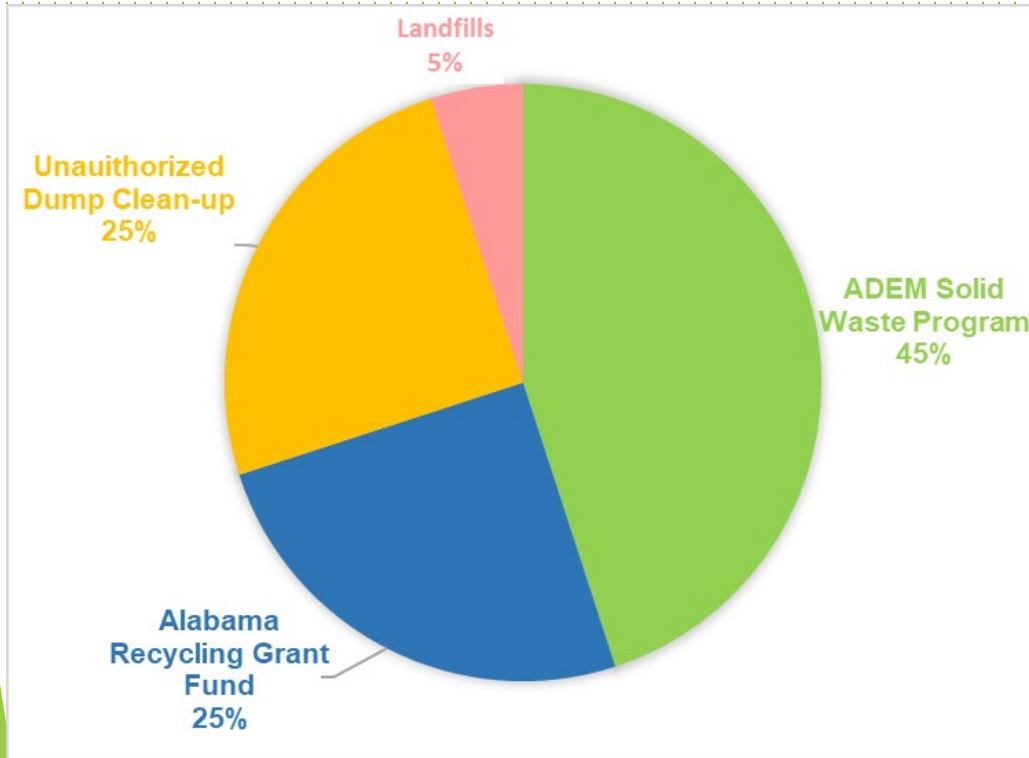
**Alabama Department of Environmental Management**

# Objectives

- **Program Background**
- **Program Details**
- **Recent Program Accomplishments**
- **Future Program Goals**



# Program Background



- **1991** – Alabama Legislature Act 90-546
  - ✓ Requires all state agencies and public school systems to implement waste reduction and recycling programs
- **2008** – Solid Waste and Recyclable Materials Management Act Introduced
  - ✓ \$1.00/ton tipping fee on all solid waste disposal
- **2009** – State SWMP adopted into regulations
  - ✓ 25% state-wide recycling goal established
  - ✓ First round of Alabama Recycling Fund Grants

# Program Details

- In 2016 A Plan for Boosting Residential Material Recovery and Recycling in Alabama was published
  - ✓ Economic benefits of recycling
  - ✓ “Hub and Spoke” model
- Statewide Recycling Campaign (2016)

## A Plan for Boosting Residential Material Recovery and Recycling in Alabama

Prepared for SERDC and the Alabama Recycling Partnership

August 2016

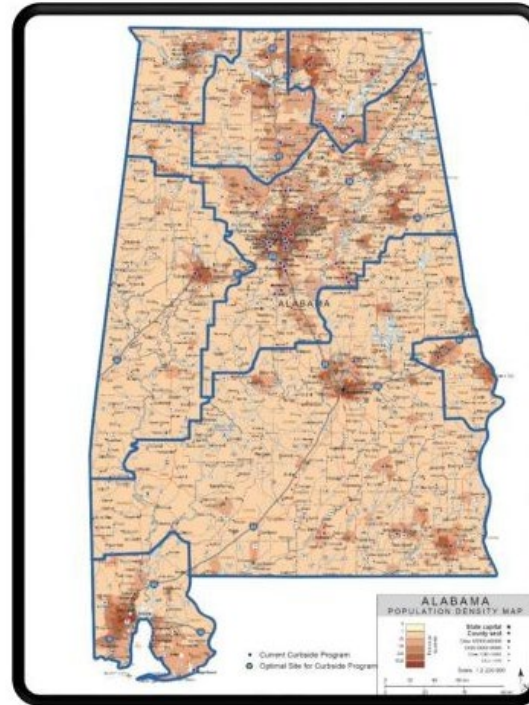


TABLE 3  
SUMMARY OF LANDFILLED RECYCLABLES IN ALABAMA

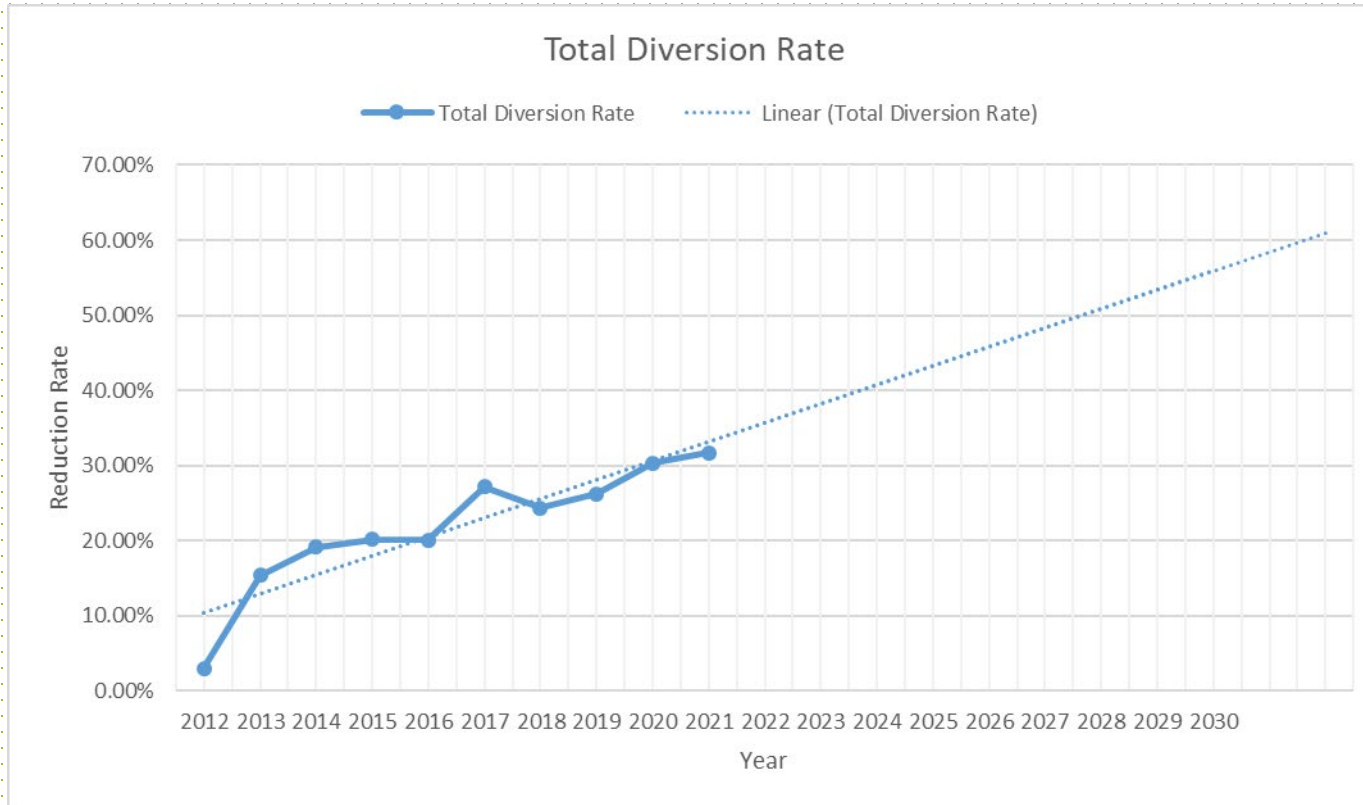
Total Tons of AL Residential MSW, 2015	Percent of MSW Potentially Recyclable	Tons of Potentially Recyclable Material Discarded in AL in 2015	Average Southeast Landfill Tipping Fee per Ton	Cost to Alabama of Discarding Potentially Recyclable Materials in 2015
2,530,000	28.12%	711,436	\$44.46	\$31,630,445

Associates, Weaverville, North Carolina

# Program Details

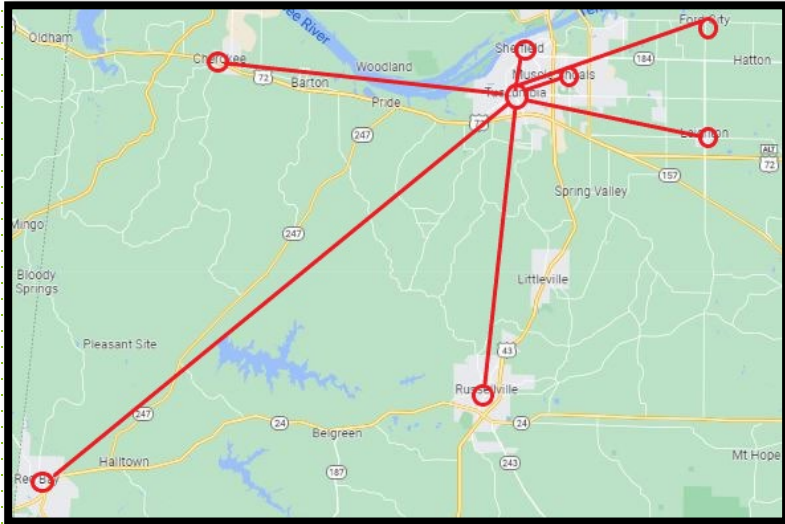
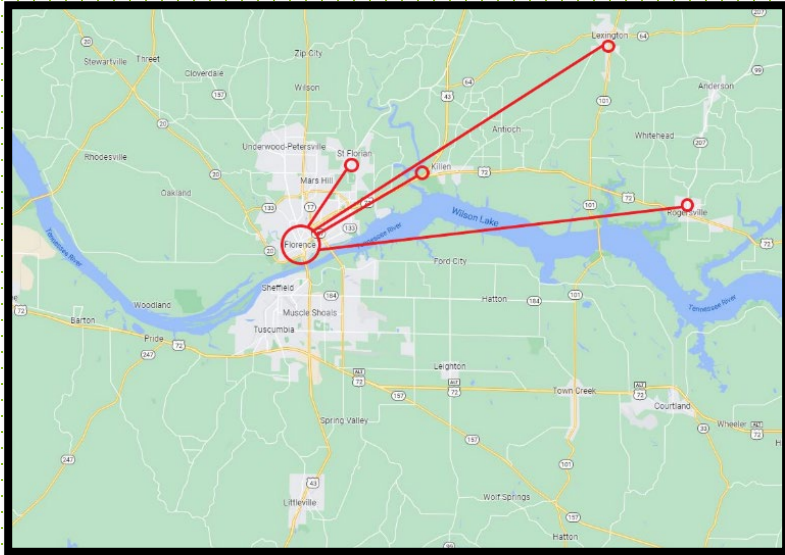
## Diversion Rate (2012-2021)

Percentage of material diverted from Alabama landfills



# Program Details

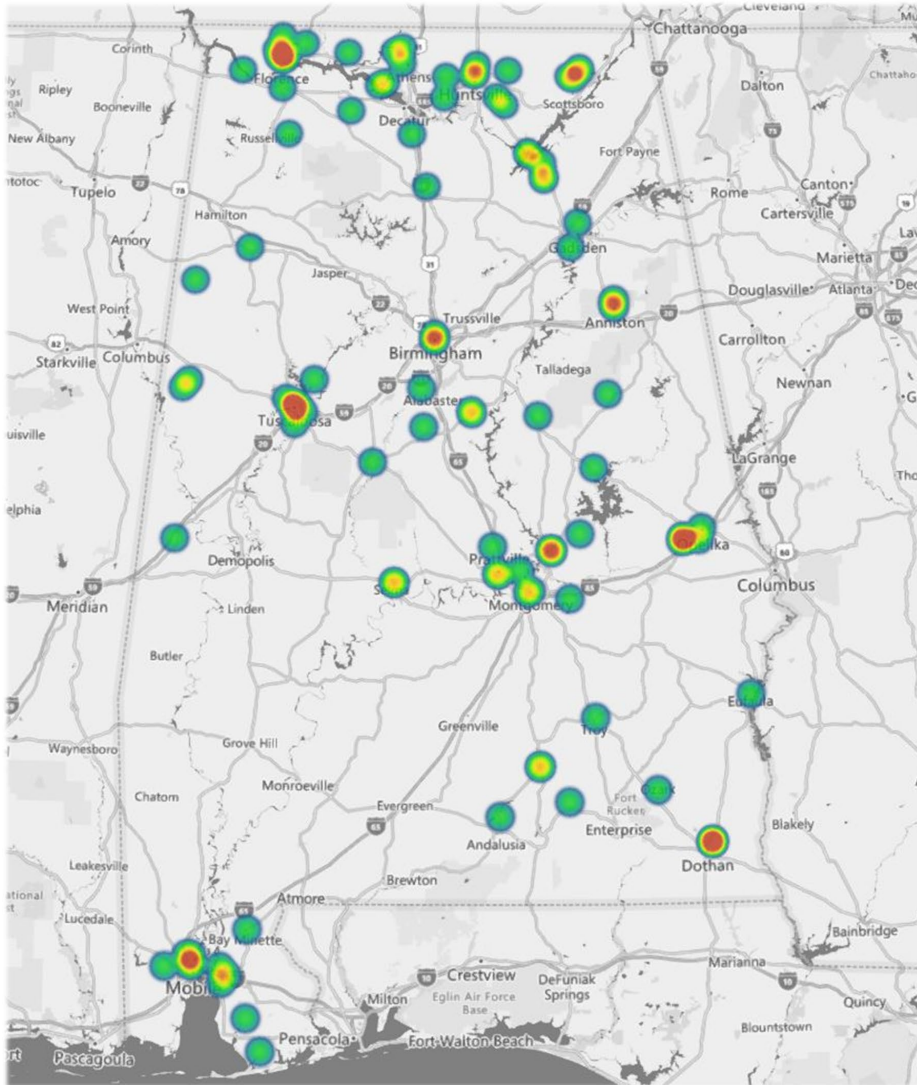
## City of Florence



## Shoals Solid Waste Authority

- Over **230** grants totaling **\$23 million** have been awarded since 2009
- Formation of partnerships
  - ✓ EARP, WARP, RANA, Albertville-Boaz and City of Florence etc.
- Development of Hub and Spoke models throughout Alabama
  - ✓ City of Florence
  - ✓ Shoals Solid Waste Authority

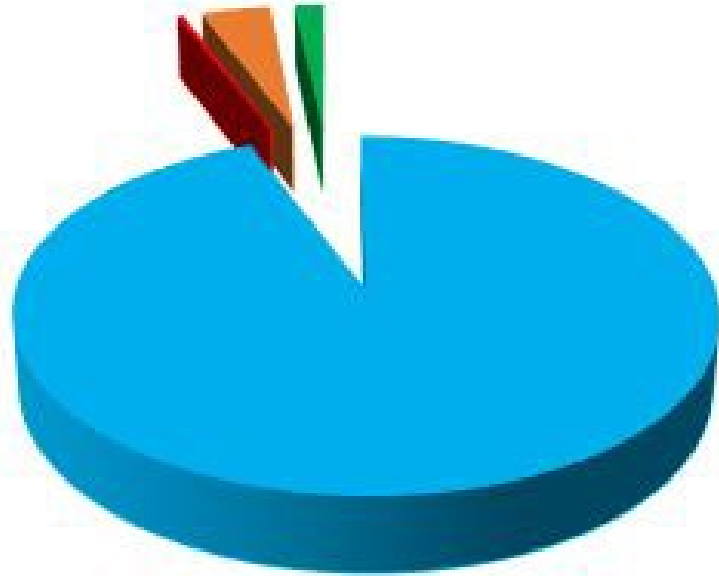
# Program Details



- Heat map of grant awardees 2009-2022
- Notable “hotspots” seen in areas that have formed partnerships
- More applicants from densely populated areas

# Program Details

FY2009 - FY2023 Grant Spending



■ Infrastructure ■ Personnel ■ Education ■ Professional Services

Majority of grant request/funding fall under “infrastructure”

✓ Equipment, trucks, repairs/refurbish, and carts/bins

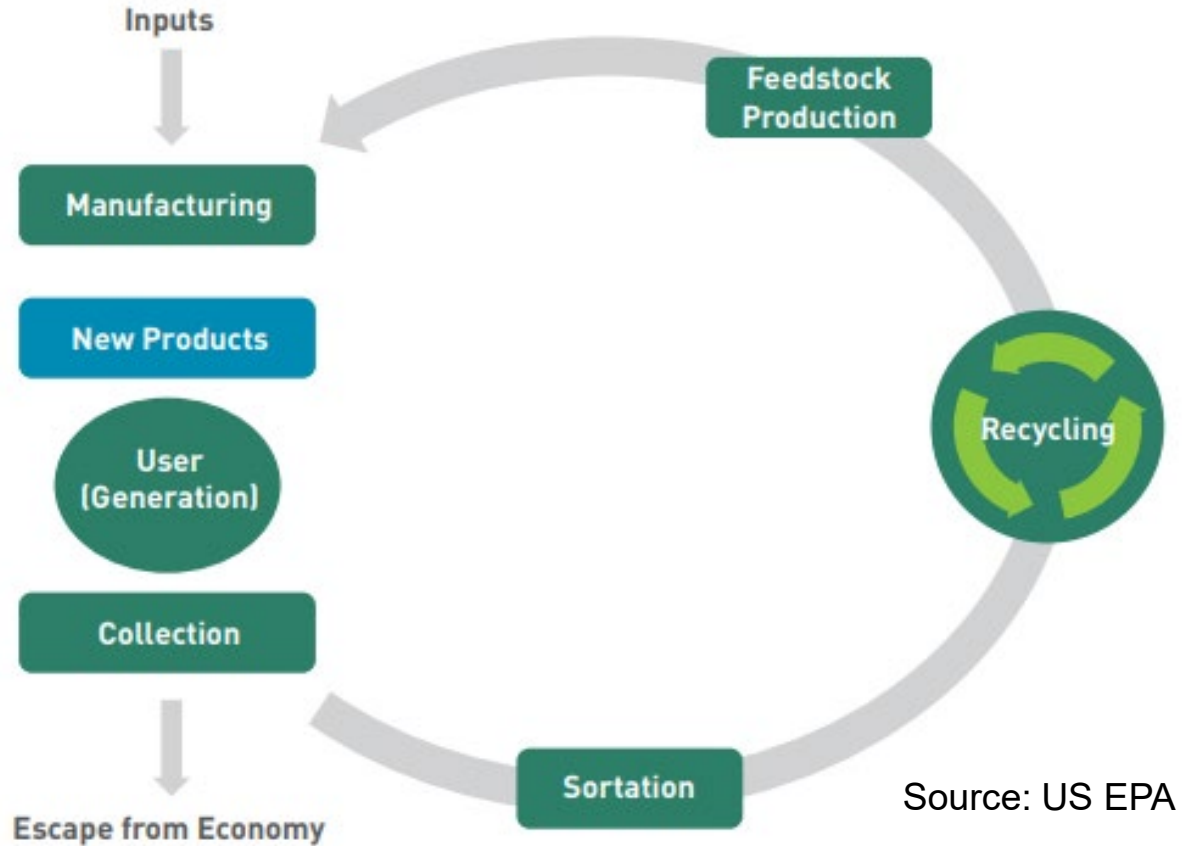


# Recent Program Accomplishments

- **21 - FY23S** grants totaling ~\$1.5 million
- **27 - FY24** grants totaling \$6 million
  - ✓ Several first-time applicants
- 2023 ADEM Recycling Grants Workshop (November 2022 and August 2023)
  - ✓ ADEM, EPA, The Recycling Partnership, and more
- School Recycling Challenge
  - ✓ **17,240 pounds** collected from 16 schools FY22-23
- Increased involvement in conferences and Education & outreach activities



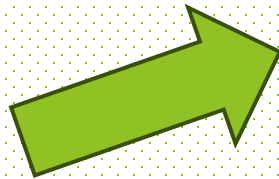
# EPA Strategy and Initiative



Solid Waste Infrastructure for Recycling Grant Program (SWIFR) & Recycling Education and Outreach Grant Program (REO)

# Future Program Goals

- Rulemaking (Stakeholders)
  - Review state of recycling and enhance program
  - Increase statewide goals
  - Enhance Reporting Requirements
- Continued engagement through education & outreach
- Enhanced data collection/measurements
- Continued collaboration with other states, regions, and organizations



The screenshot shows the AEPACS website interface. At the top left is the ADEM logo and the text 'Alabama Department of Environmental Management'. Below this is the main title 'AEPACS - Alabama Environmental Permitting and Compliance System'. A small note says 'Please click the About link to see which programs are currently active in this system'. On the top right, there are links for 'About' and 'Contact', and a 'Sign In' button with a magnifying glass icon. The main content area is titled 'Permitting &amp; Compliance' and features a box with the heading 'What can I do here?' containing three bullet points: 'Apply for permits', 'Manage your permits (pay fees, apply for renewals)', and 'Submit reports (required by your permit or certification)'. Below this box is a section that says 'To get started, you'll need an account.' with a prominent 'CREATE AN AEPACS ACCOUNT' button and a smaller link for 'Sign in with an existing account'. To the right of the main content, there is a 'Public Services' section with a sub-section for 'Site Map Explorer' which includes a brief description and a right-pointing arrow.

# Topics on the Horizon



- National Recycling Strategy

- Consumer Purchasing Awareness

- Managing Food Use

- Food Waste/Organics Composting

- EPR (Extended Producer Responsibility)

- E-Waste Recycling



## Areas of Responsibility



- **Lauren Grace Johnson**  
**334-279-3045**
- **Max Stonicher**  
**334-271-7874**
- **Jeremy Browning**  
**334-271-7948**

**Manager:**

- **Rick Kelsey: 334-271-7770**