



**SOLID WASTE
AUTHORITY**
BALDWIN COUNTY

The Solid Waste Disposal Authority of Baldwin County, Alabama

Baldwin County Materials Recovery Facility



Who Are We?



- Provide Weekly Garbage Collection Service to 50,000 customers
- Assist more than 2,800 customers weekly at the 3 landfills and transfer station
- Process and/or dispose of more than 7,600 tons weekly
- Provide Recycle Drop-off Locations throughout the county and process material
- Countywide Litter Patrol Services



MRF Rendering

50,000 Square Foot Materials
Recovery Facility (MRF)

10,000 Square Foot
Administrative and Educational
Facility



Construction Update

The MRF is expected to be fully operational Fall of 2024.





Site Layout



Total MRF Cost

Scope	Vendor	Amount	Expenses to Date
Engineering	LaBella Associates	\$990,000	\$702,023
Equipment	Green Machine	\$4,433,538	\$1,684,774
Equipment	Marathon Equipment	\$569,306	\$569,306
Equipment	Thompson Tractor	\$355,000	\$355,000
Educational Facility	Whirlwind Creative	\$519,341	\$327,582
MRF Construction	Persons Services Corporation	\$18,763,873	\$12,369,838
Total		\$25,631,058	\$15,915,414



Total Grant Funding

Grant	Project	Amount	Status
ARPA- Baldwin County	MRF	\$4,604,000	Awarded
ADEM	Educational Facility, Loader, Forklift	\$1,285,000	Awarded
Energy Efficiency Block Grant	Baler	\$246,000	Allocated
The Recycling Partnership	PET Optical Sorter	\$200,000	Awarded
The Recycling Partnership	Convenience Centers	\$202,000	Awarded
The Recycling Partnership	Eddy Current	\$65,000	Awarded
Glass Recycling Foundation	Glass Bins and Glass Crusher	\$21,000	Awarded
Total Grant Funding		\$6,564,000	

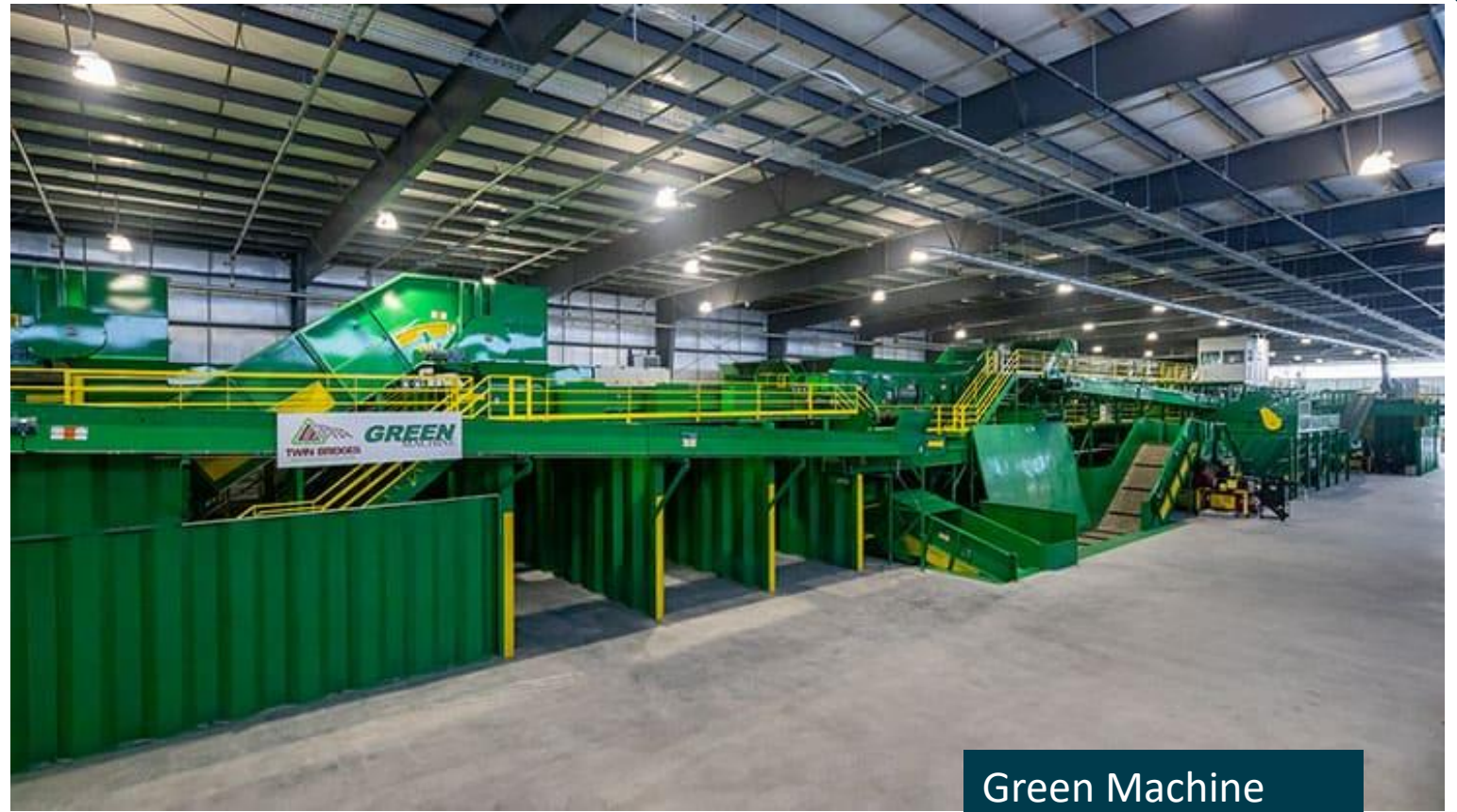


MRF Equipment Selection

The MRF will be medium size and able to process 10 tons per hour.

Approx. 14,000 tons per year with 1 shift.

If additional shifts are added the capacity can increase to 40,000 tons per year.



Green Machine



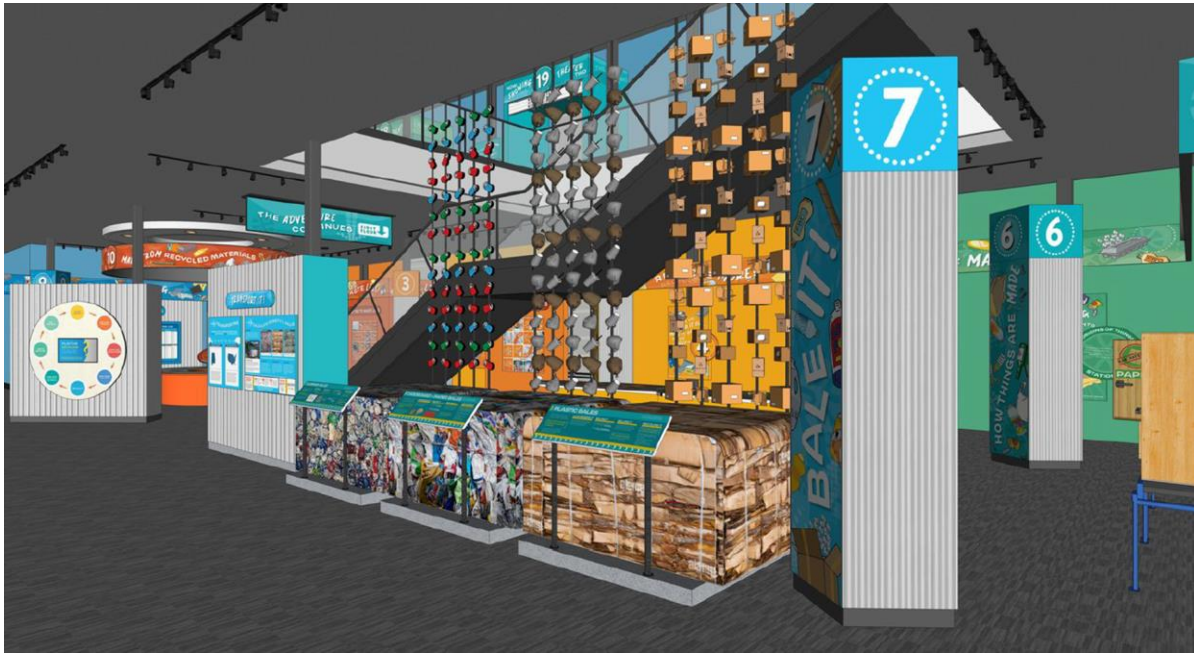
Waste & Recycling Adventure Center



The Waste and Recycling Adventure Center will be a 7,000 square foot two story educational facility. It will be two-fold, the first floor focusing on recycling and the second floor showcasing the full life cycle of waste.

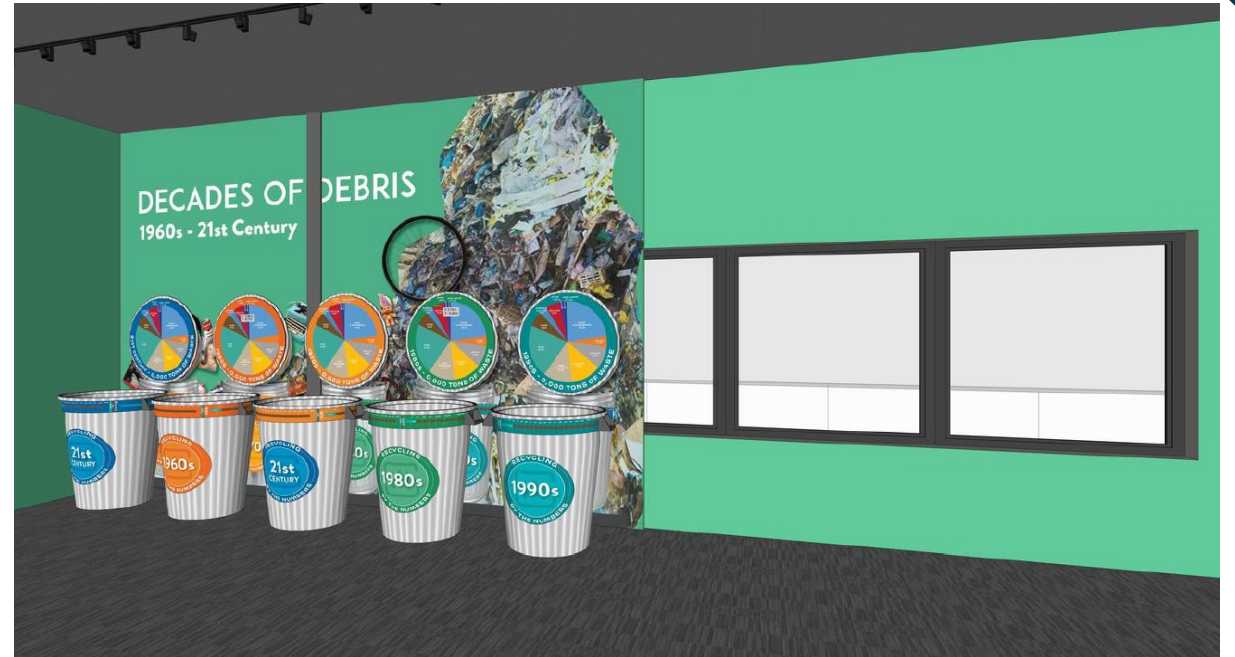


WRAC Floor 1





WRAC Floor 2





Additional Recycling Efforts

- Convenience Centers (CHaRM)
 - 3 – 2024
 - 3 – 2025
- Curbside Recycling 2025
- Regional Recycling Expansion
- Implementation of Commercial & School Recycling Programs
- STEM Certified Education Trailers
- Food Waste Composting



Current Recycling Drop-Offs



BaldwinCountySWDA.org | 15093 Landfill Dr. Summerdale, AL 36580 | 251.972.6878



Center for Hard to Recycle Materials

The CHaRM Facilities will accept:

- Plastic
- Paper
- Aluminum
- Cardboard
- Glass
- Electronics
- Batteries
- Lightbulbs
- Tanks & Extinguishers
- Household Hazardous Waste

SWDA will be opening 5 CHaRM locations across Baldwin County.

- Fairhope
- Spanish Fort
- Bay Minette
- Magnolia
- Orange Beach



CHaRM at Magnolia Landfill





Fairhope CHaRM



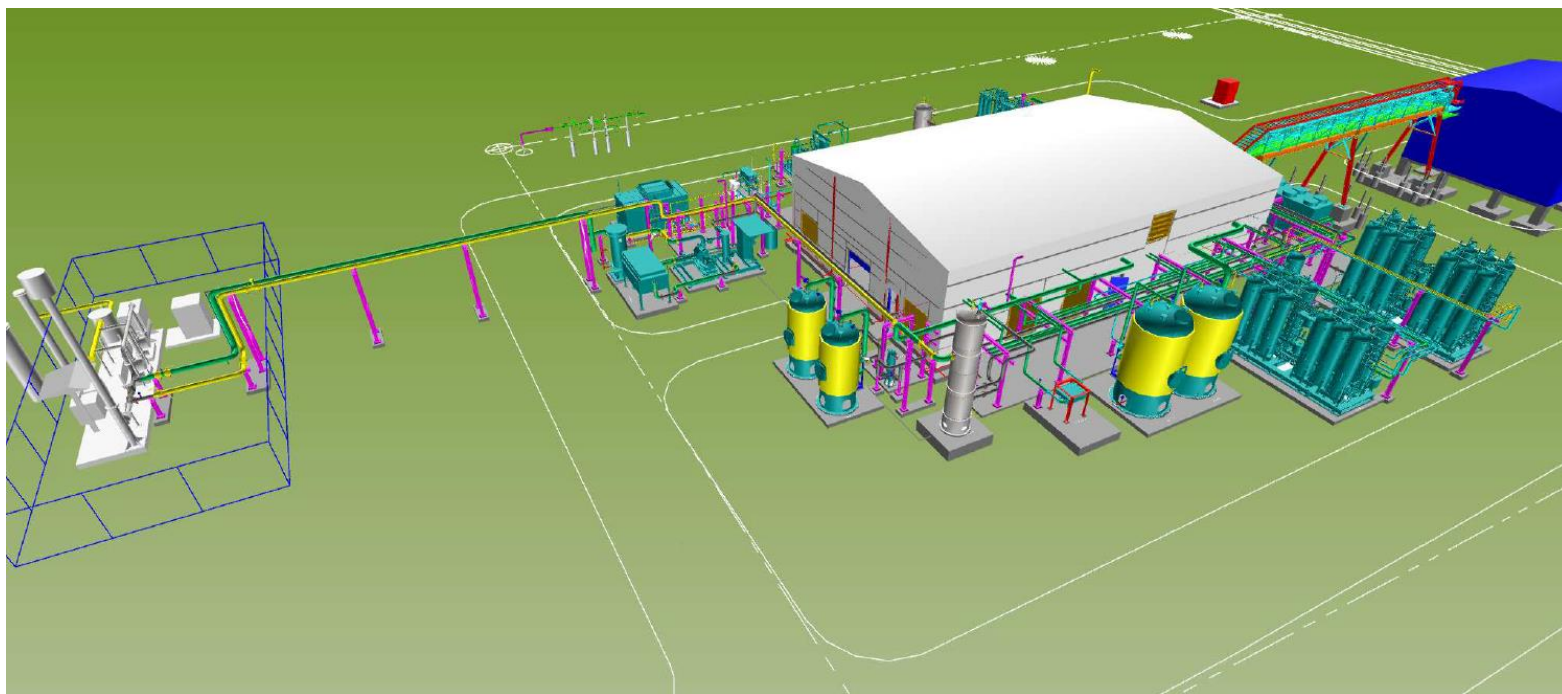


Landfill Gas To Energy Plant

The Magnolia Landfill is currently in the process of constructing a Landfill Gas to Energy Plant.

This facility harvests the gases (mostly methane) from the landfill, scrubs it, and enables it to be piped directly to local utilities.

SWDA has constructed a two-mile pipeline that will supplement the natural gas for Riviera Utilities.





Landfill Gas To Energy Plant



BaldwinCountySWDA.org | 15093 Landfill Dr. Summerdale, AL 36580 | 251.972.6878



Landfill Gas To Energy Plant



Landfill Gas To Energy Plant

